



CQG DESKTOP TUTORIAL

Presentation created by: Huatai Financial USA Inc

DISCLAIMER: FUTURES TRADING ENTAILS SIGNIFICANT RISK OF LOSS WHICH SHOULD BE UNDERSTOOD PRIOR TO TRADING AND MAY NOT BE SUITABLE FOR ALL INVESTORS. PLEASE CONSIDER WHETHER TRADING IS SUITABLE FOR YOU. THIS IS NOT A SOLICITATION TO BUY OR SELL FUTURES PRODUCTS BY HUATAI FINANCIAL USA INC.



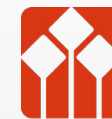
ABOUT CQG

CQG is the leading trading software company in the industry, and it is highly embraced by brokers in US market. CQG has direct market access to 45 global exchanges and provides a series tradable products. Besides, CQG has entered the market for more than 35 years.

Huatai USA provides its clients with CQG Desktop, which can be operated using computers, tablets and smartphones, supporting Chinese version as well. CQG Desktop is fully functional with fundamental functions such as trading, market data, chart, analysis, positions and fund information. Besides, it is easy to use. For clients' benefit, this PPT is going to include all the functions mentioned above (web-based and smartphone-based).

ABOUT HUATAI FINANCIAL USA INC.

Huatai Financial USA Inc (Huatai USA), a Delaware corporation, has its principle place of business at 200 West Monroe St., Suite 1675, Chicago, IL 60606. Huatai USA is a wholly owned subsidiary of Huatai Capital Management (HK) Limited ("Huatai Capital"). Huatai USA is approved by the Chinese Securities Regulatory Commission (CSRC) to conduct derivative brokerage service in US. Huatai USA is a member with the National Futures Association (NFA) and registered as a Futures Commission Merchant (FCM) with the Commodity Futures Trading Commission (CFTC). Huatai USA has strong relationship with Huatai Futures and Huatai Securities in China and is dedicated to serve our customers.



AGENDA

- Introduction of account application procedures, login page, language setting and home page
- Navigation bar (preference setting, symbol list, add & connect tools)
- Main Pages
 - Real-time quotes
 - Order placing window, orders/position, account info
 - Charts & Studies
 - Options
 - News
- Smartphone version
- Contact us



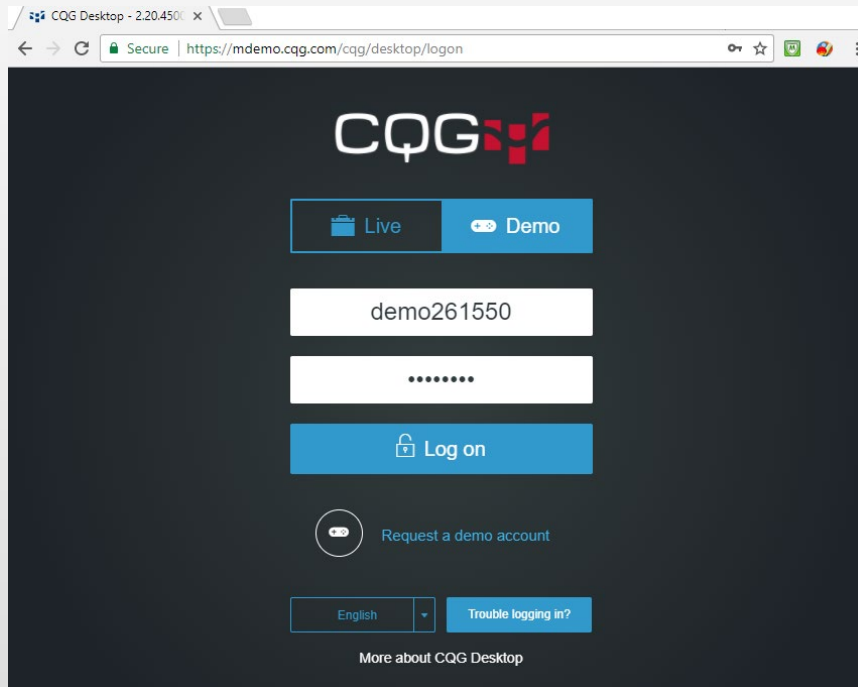
ACCOUNT APPLICATION PROCEDURE

**This procedure only applies to demo account application. For real-time trading please contact Huatai USA.*

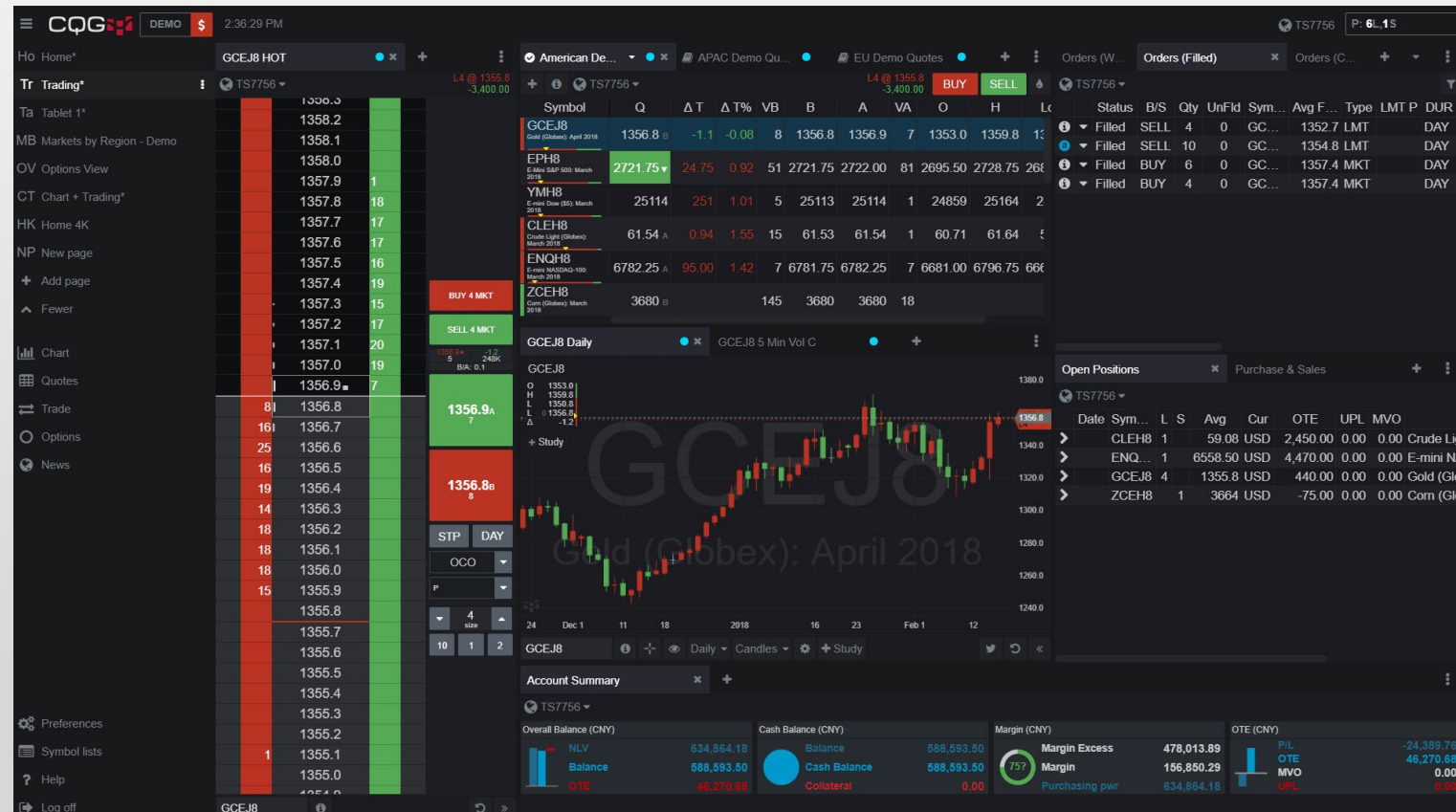
- Please go to <https://mdemo.cqg.com/cqg/desktop/op/demorequest>
- Please fill out name and email address to register
- You will then receive an email containing a login link, login name and password.

The screenshot shows a web browser window with the URL <https://mdemo.cqg.com/cqg/desktop/demorequest>. The page features the CQG logo at the top, followed by the heading "Request a demo account". Below this, there are several input fields: "First Name", "Last Name", "E-mail Address", "Code", and a field containing the number "79358". A blue "Sign Up" button is positioned below the code field. A disclaimer box states: "Request a demo account to see live market data and simulated trading. By signing up for this demo, you are opting into receiving product update emails. Don't worry, we won't spam you, and you can opt out at any time." At the bottom, there is a language dropdown menu set to "English" and a "Trouble logging in?" link. A footer link "More about CQG Desktop" is also visible.

LOGIN PAGE

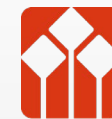


CQG HOME PAGE



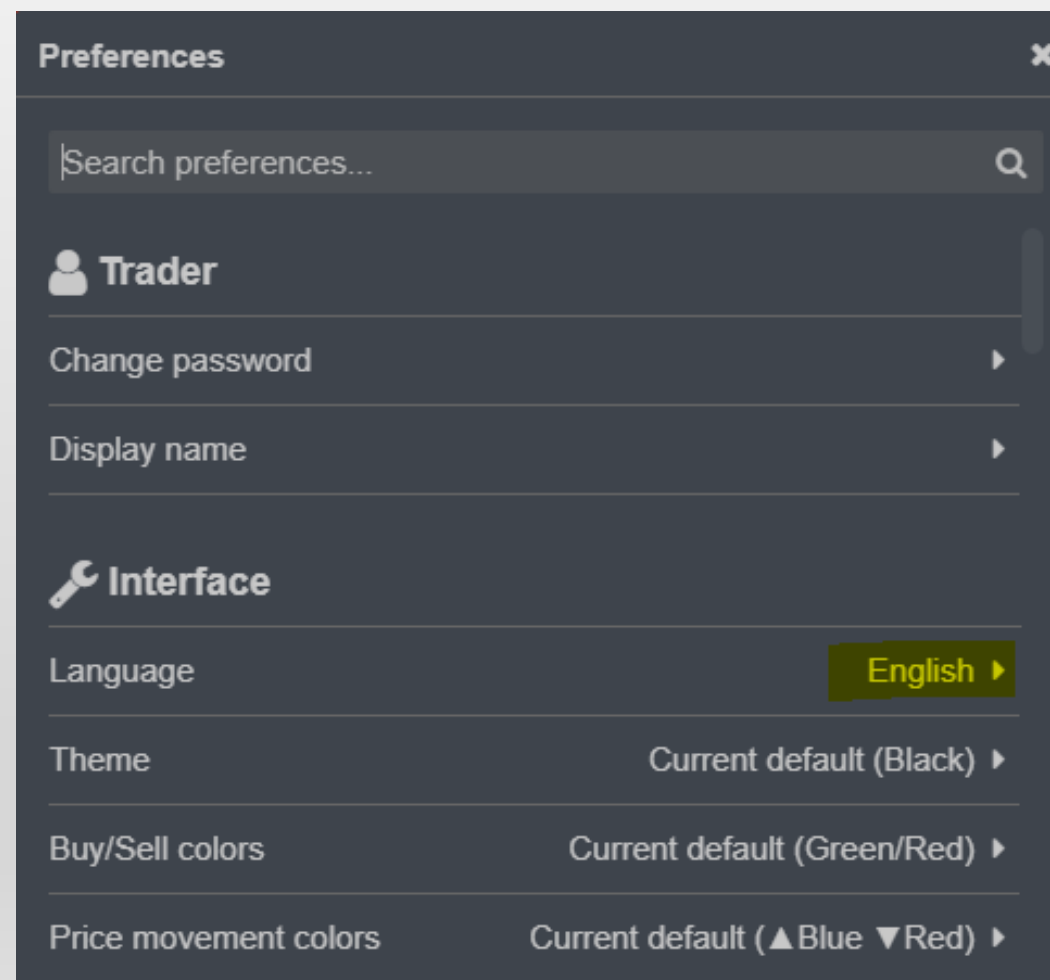
- Please go to <https://mdemo.cqg.com/cqg/desktop/logon>
- Please type in your username and password
- Select language for Chinese
- Click log on
- You will enter to the page on the right

You can also change language in "Preference"



LANGUAGE & COLOR SETTING

- If you have entered English version, please click:
 - Preferences (you will see the window on the right)
 - Select Language
 - Select "Chinese" version
- Unlike Chinese convention, for most US-based trading platform, **red** usually means market going down, and **green** means market going up. If you'd like to make any change, please go to:
 - Preferences
 - Set price movement colors or buy/sell colors





* YOU CAN CUSTOMIZE YOUR OWN PAGE OR USE DEFAULT TRADING PAGE

The screenshot displays the CQG trading interface with the following components:

- Top Panel:** Shows the current market for GCEJ8 (Gold) with a price of 1356.8 and a change of -1.1. It includes 'BUY' and 'SELL' buttons and a 'BUY 4 MKT' button.
- Market Data Table:** A table listing various symbols and their prices, such as GCEJ8 (1358.2), EPH8 (2721.75), and ZCEH8 (3680).
- Chart Panel:** A candlestick chart for GCEJ8 with a title 'GCEJ8 Daily' and 'GCEJ8 5 Min Vol C'. The chart shows price movement from late 2017 to early 2018.
- Orders Panel:** A table showing filled orders with columns for Status, B/S, Qty, UnFld, Sym, Avg F, Type, LMT, P, and DUR.
- Open Positions Panel:** A table listing open positions for symbols like CLEH8, ENQ, GCEJ8, and ZCEH8, including details like L, S, Avg, Cur, OTE, UPL, and MVO.
- Account Summary Panel:** A summary of the user's account, including Overall Balance (CNY), Cash Balance (CNY), Margin (CNY), and OTE (CNY).

Navigation menu with items: Home, Trading*, Options View, New page, Tablet, Market, Home 4K, Chart + Trading*, Add page, Fewer.

Navigation menu with items: Chart, Quotes, Trading*, Orders, News, Admin.

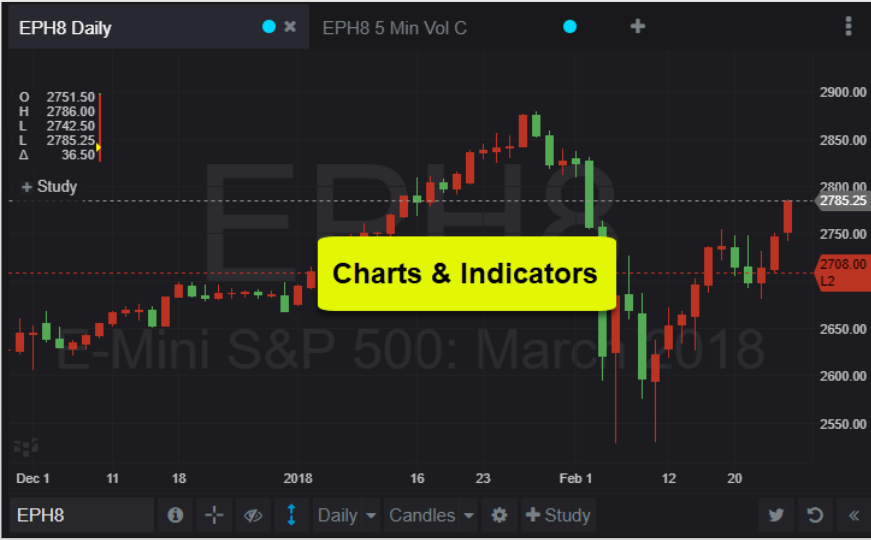
Navigation menu with items: Preferences, Symbol lists, Help, Log off.

Order book for EPH8 HOT

Price	Quantity	Order Type
2789.50		
2789.25		
2789.00		
2788.75		
2788.50		
2788.25		
2788.00		
2787.75	234	
2787.50	197	
2787.25	175	BUY 1 MKT
2787.00	201	
2786.75	160	SELL 1 MKT
2786.50	150	
2786.25	162	
2785.50	74	
2785.25		
2785.00		
2784.75		
2784.50		
2784.25		
2784.00		
2783.75		
2783.50		
2783.25		
2783.00		
2782.75		
2782.50		
2782.25		
2782.00		
2781.75		
2781.50		
2781.25		

Quotes table for TS8004

Symbol	Q	Δ T	Δ T%	VB	B	A	VA	O	H	Lo
CLEJ8	64.03	0.48	0.76	6	64.02	64.03	27	63.60	64.24	6
EPH8	2785.25	36.50					74	2751.50	2786.00	274
ENQH8	7004.25	94.50					6	6918.25	7007.50	689
YMJ8	25768	453	1.79	1	25768	25769	2	25328	25774	25
RBEJ8	2.0048	0.0...	0.75	3	2.0041	2.0048	2	1.9945	2.0122	1.9
ZCEK8	3770			68	3770	3770	92			
ZSEK8	10450			12	10450	10450	6			



Account Summary for TS8004

Overall Balance (USD)	Cash Balance (USD)	Margin Excess	OTE (USD)
NLV: 112,046.50	Balance: 102,525.00	55,616.50	P/L: 0.00
Balance: 102,525.00	Cash Balance: 102,525.00	Margin: 56,430.00	OTE: 9,521.50
OTE: 9,521.50	Collateral: 0.00	Purchasing pwr: 112,046.50	MVO: 0.00
			UPL: 0.00

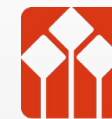
Orders (Working) table for TS8004

Account	Status	B/S	Qty	UnFlid	Symbol
TS8004 (D...)	Working	BUY	1	1	CLEJ8
TS8004 (D...)	Working	BUY	1	1	CLEJ8
TS8004 (D...)	Working	SELL	1	1	EPH8

Open Positions table for TS8004

Account	Date	Symbol	L	S	Avg	Cur
TS8004 (D...)		EPH8	2		2708.00	USD
TS8004 (D...)		GCEH8	2		1329.3	USD
TS8004 (D...)		GCEJ8	7		1330.2	USD
TS8004 (D...)		RBEJ8		1	1.9593	USD
TS8004 (D...)		ZSEK8		1	10426	USD





AGENDA

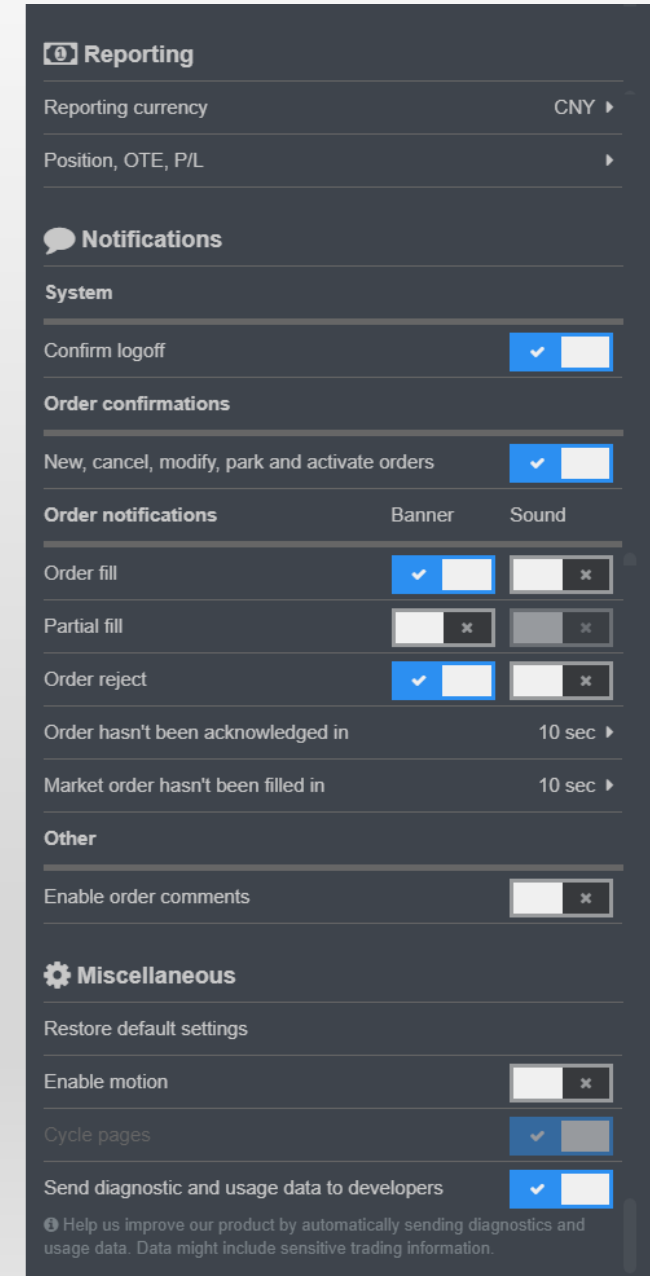
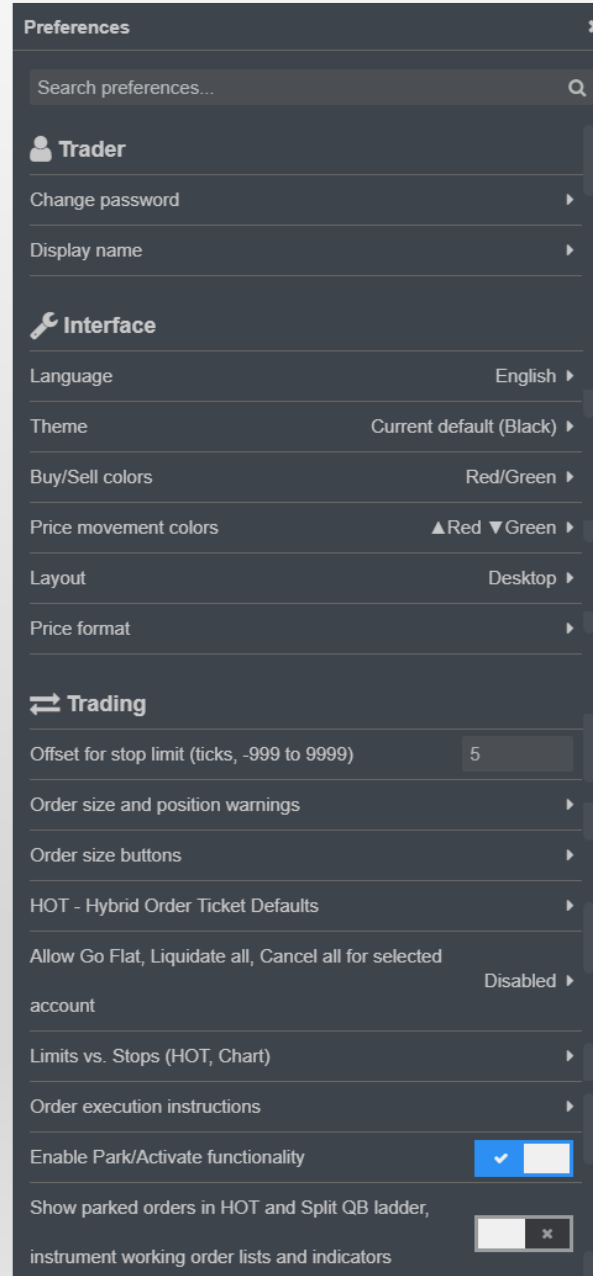
- Introduction of account application procedures, login page, language setting and home page
- Navigation bar (preference setting, symbol list, add & connect tools)
- Main Pages
 - Real-time quotes
 - Order placing window, orders/position, account info
 - Charts & Studies
 - Options
 - News
- Smartphone version
- Contact us



PREFERENCE

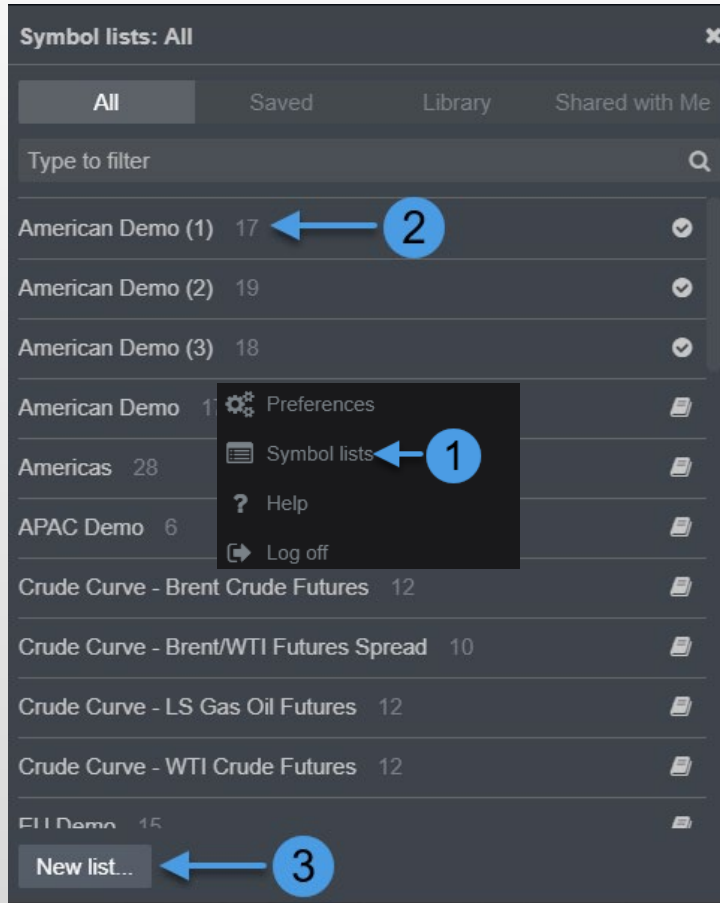
In Preference setting, you can:

- Change password
- Set language, buy/sell color, price movement color
- Turn on trading-related functions
- Change currency type in Account Information
- Set order notification and sound alert
- ...





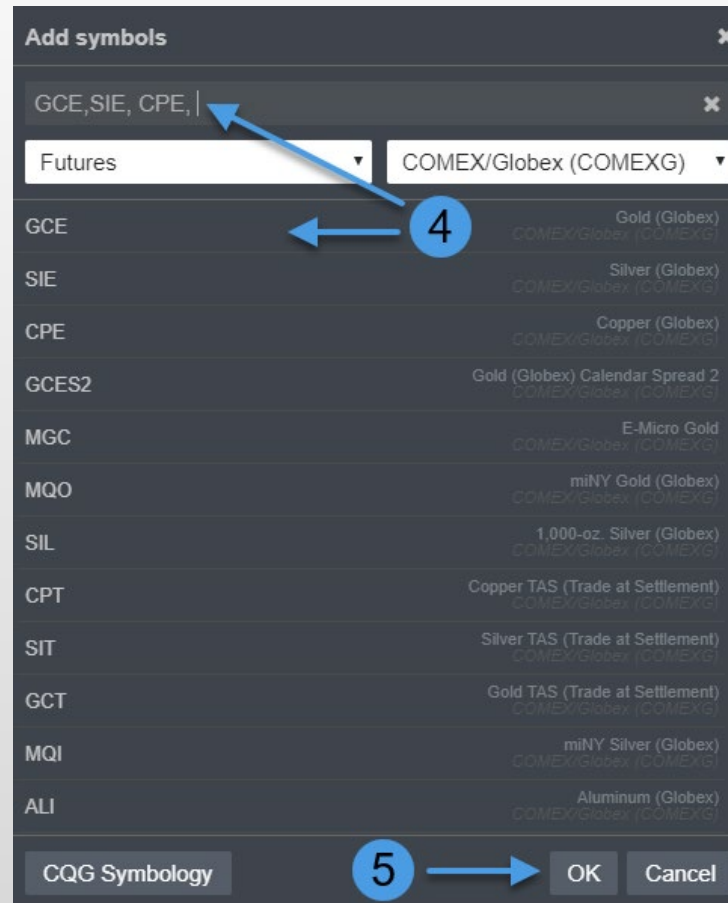
SYMBOL LIST



1: Click **Symbol List**

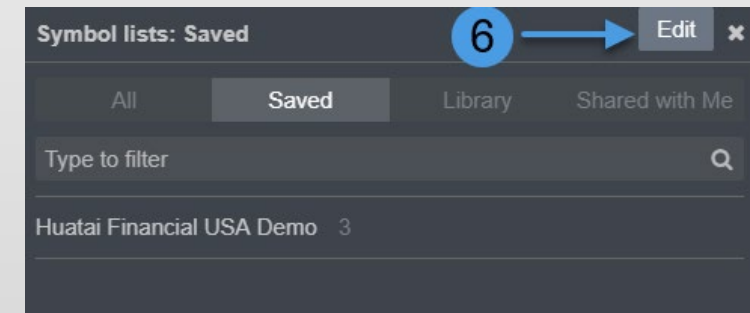
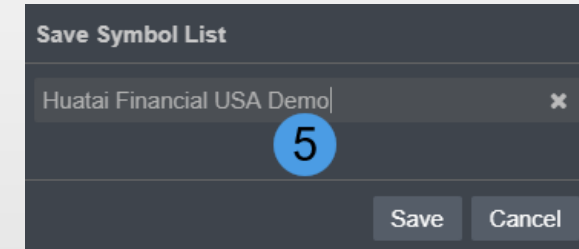
2: Query/edit Default symbol list----
there are 17 common product symbols
including in “American Demo”

3: Create your own list



4: Add Symbol

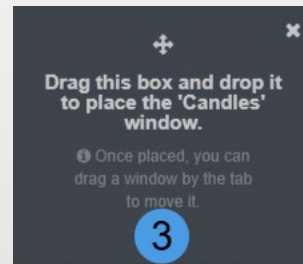
- Type CQG product symbols, exchange codes or common words in here
- You can also choose by contract type or exchange
- Click the product symbols you need
- Use “;” to separate each symbol



5: Click “OK”
Name/Save your own list

6: Click “Edit”
You can delete the list

ADD TOOLS (CHARTS, REAL-TIME QUOTES, TRADING, OPTIONS, NEWS)

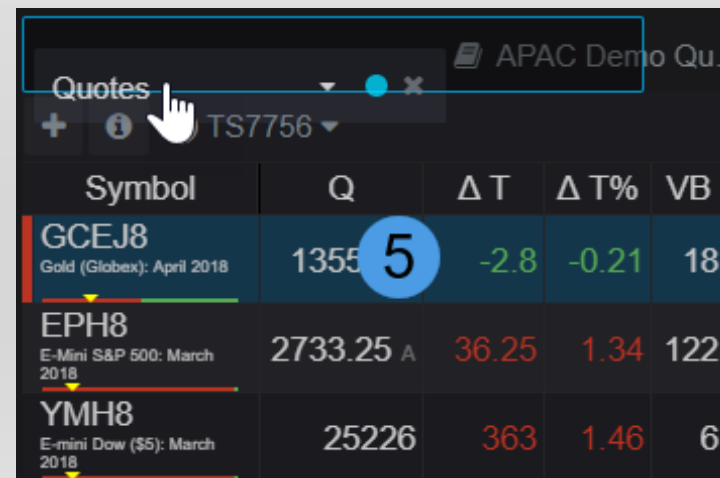
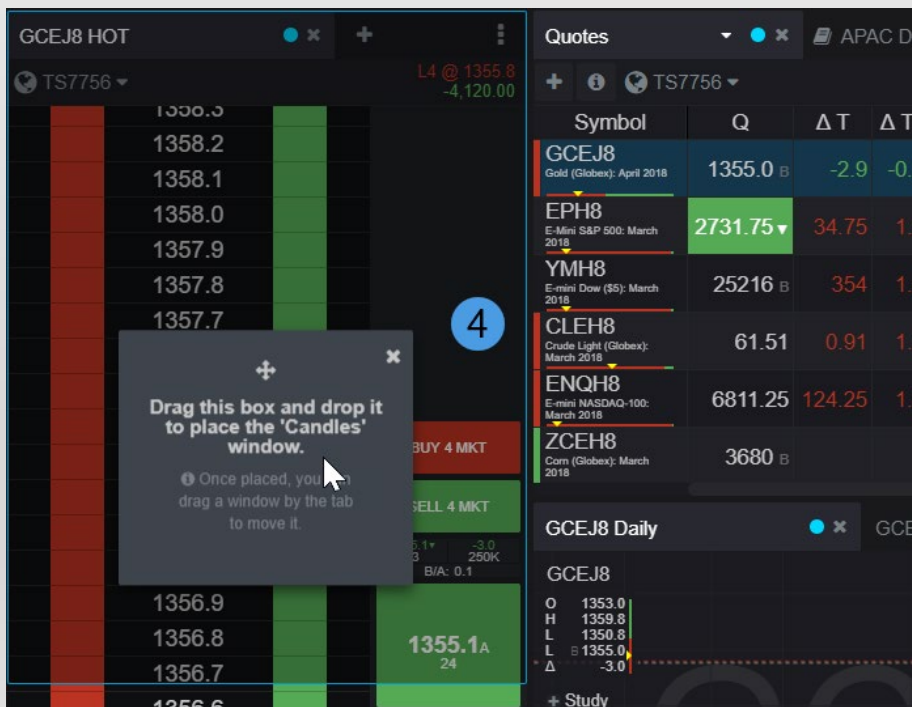


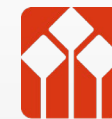
1 & 2. Click Tools

3. A floating window will appear

4. Drag the box to anywhere you want

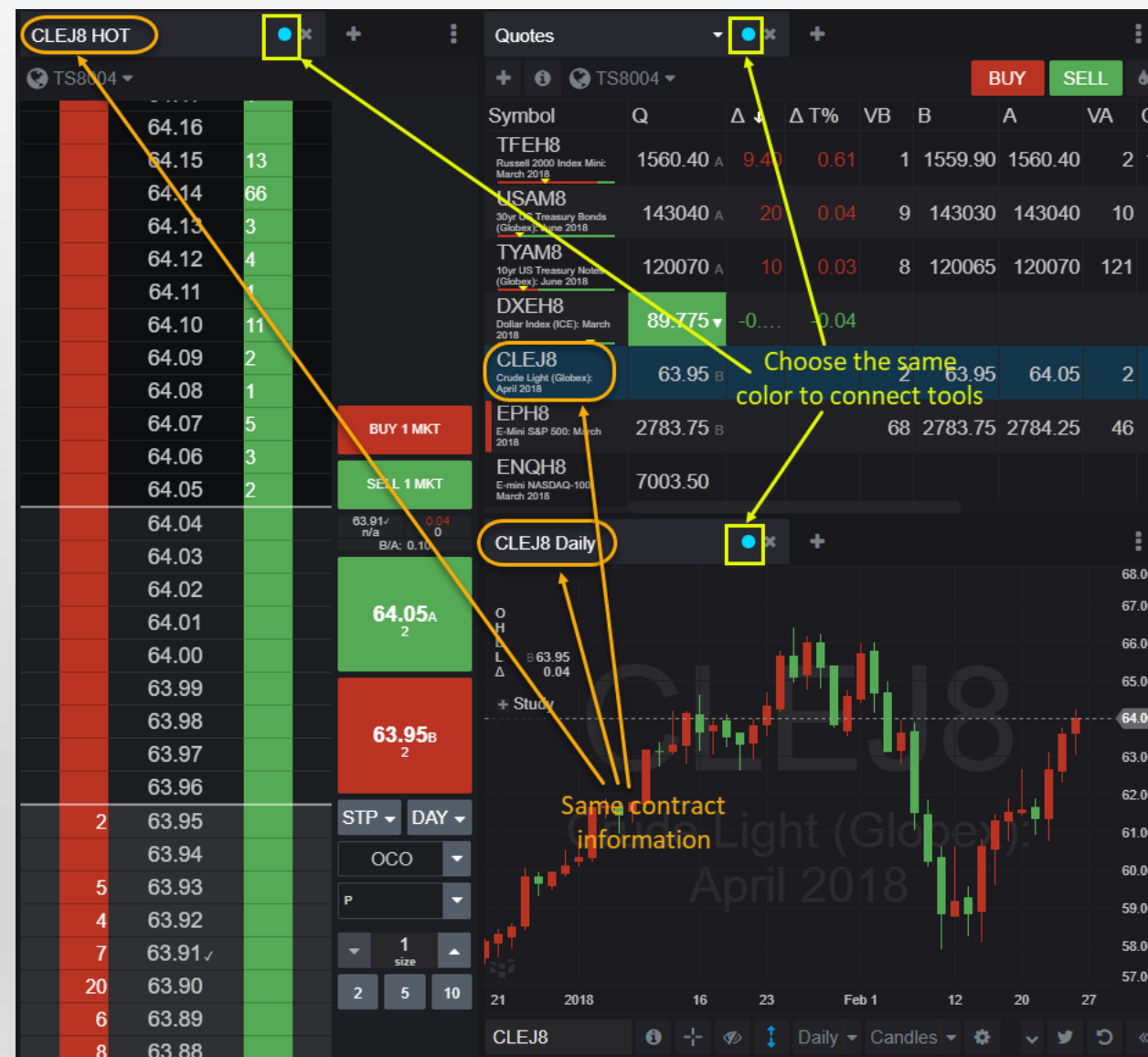
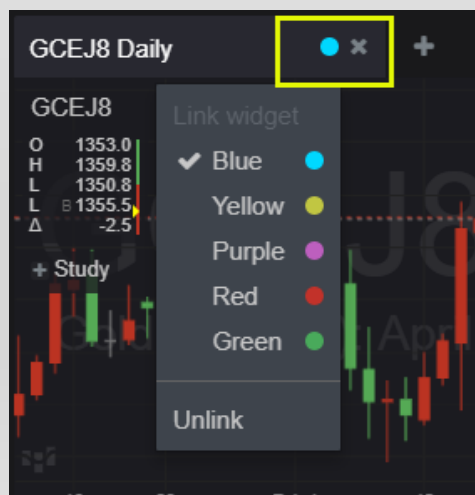
5. You can also drag the tool box to move anywhere you need



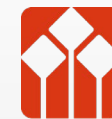


CONNECT TOOLS

- Select the same color buttons to connect different tools:
- E.g. the three tools in picture 1 are connected. When you change the contract symbol in one tool, information related to this contract will appear in the other two windows as well.

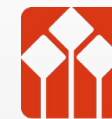


Picture 1



AGENDA

- Introduction of account application procedures, login page, language setting and home page
- Navigation bar (preference setting, symbol list, add & connect tools)
- Main Pages
 - Real-time quotes
 - Order placing window, orders/position, account info
 - Charts & Studies
 - Options
 - News
- Smartphone version
- Contact us



REAL-TIME QUOTES – PRICE QUOTES

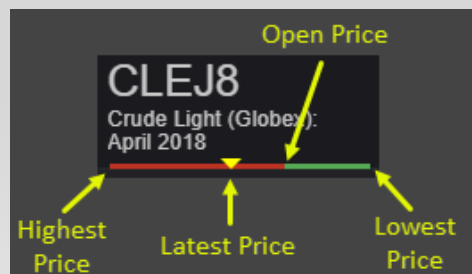
1. Type in CQG product symbols or common words, and click the symbols you need; the system will show the most active contracts; if you need contracts for other months, please type in month code after contract code (Jan-F, Feb-G, March-H, April-J, May-K, June-M, July-N, August-Q, Sept-U, Oct-V, Nov-X, Dec-Z and 8 represents 2018).

2. Click the “Manage columns” button and then select the columns that you wish to display.

3. The trading box would pop out when clicking Buy/Sell button.

4: The red or green bar next to each contract symbol represents orders or positions related to this contract.

5: Price thermometer



A screenshot of a trading interface showing a table of contracts. Numbered callouts 1-6 highlight specific features: 1 points to the search bar, 2 to the 'Manage columns...' button, 3 to the 'BUY' and 'SELL' buttons, 4 to the red/green bars next to contract symbols, 5 to the price thermometer for USAH8, and 6 to the 'Custom QB' option in the settings menu.

Symbol	Q	Δ T	Δ T%	VB	B	A
CLEH8 Crude Light (Globex): March 2018	61.44 A	0.83	1.37	3	61.43	61.44
EPH8 E-Mini S&P 500: March 2018	2733.00 A	35.75	1.33	113	2733.00	2733.00
ENQH8 E-mini NASDAQ-100: March 2018	6815.00 A	128.50	1.92	28	6815.00	6815.00
YMH8 E-mini Dow (\$): March 2018	25225 A	362	1.46	14	25225	25225
ZCEH8 Corn (Globex): March 2018	3680 A			145	3680	3680
ZSEH8 Soybeans (Globex): March 2018	10166 A			21	10166	10166
ZLEH8 Soybean Oil (Globex): March 2018	31.77 A			1	31.71	31.77
ZWAH8 Wheat (Globex): March 2018	4610 B			3	4610	4620
USAH8 30yr US Treasury Bonds (Globex): March 2018	143210	90	0.20	88	143210	143220
TYAH8 10yr US Treasury Notes (Globex): March 2018	120115▲	10	0.03	717	120110	120115
GLEJ8 Live Cattle (Globex): April 2018	127.250 A			14	127.250	127.250
HEJ8 Lean Hogs (Globex): April 2018	69.725 B			1	69.725	69.725

REAL-TIME QUOTES – OTHER STYLES OF QUOTES



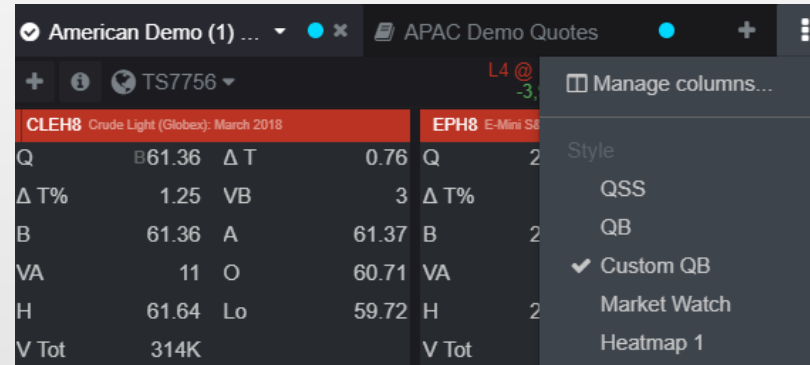
6: Other styles of quotes

CLEH8 60.71 61.64 59.72 B 61.38 0.78	EPH8 2695.50 2735.00 2688.50 A 2733.00 36.00	GCEJ8 ✕ 1353.0 1359.8 1350.8 B 1355.5 -2.5	ENQH8 6681.00 6818.00 6669.75 A 6815.00 128.00
ZCEH8	DXEH8	SIEH8	YMH8
A 3680 2	88.890 88.890 88.445 A 88.530 -0.475	16.830 16.950 16.605 A 16.830 -0.050	24859 25250 24792 A 25225 362

- Quote-board
Show open price, highest price, lowest price, latest price and price change

CLEH8	61.37 A	0.77
EPH8	2734.25	37.25
GCEJ8	1355.6 B	-2.4
ENQH8	6817.00 B	130.00
ZCEH8	3680 A	2
DXEH8	88.520 B	-0.485
SIEH8	16.830	-0.050

- Market-watch: the most intensive quotes style



- Customized quote
Click "Manage Columns" to use this function

ENQH8 2.00 % 133.50 6820.50B 452K	YMH8 1.50 % 372 25235A 283K	CLEH8 1.32 % 0.80 61.40A 315K	GCEJ8 0.13 % 1358.2B 251K	ZLEH8 0.16 % 31.65B
RBEH8 1.54 % 0.0263 1.7393A 42K	EPH8 1.40 % 37.75 2734.75 1.6M	JY6H8 0.89 % 0.000... 0.0094400A 180K	SIEH8 0.27 % 16.835B 79K	ZSEH8 0.73 % 88.515A 10100A

- Heat-map: colors and ranking are based on price movement

ENQH8 1.98% 6819.50A	RBEH8 1.50% 1.7387B
CLEH8 1.30% 61.39B	JY6H8 0.89% 0.0094400A
ZWAH8 0.16% 4810B	SIEH8 0.24% 16.840A

ORDER PLACING – SIMPLE WAY



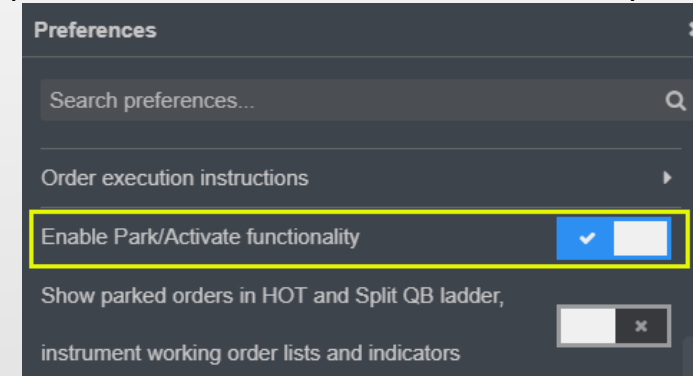
Select account, symbol, price, quantity, order type and duration, then place the order

Order Type

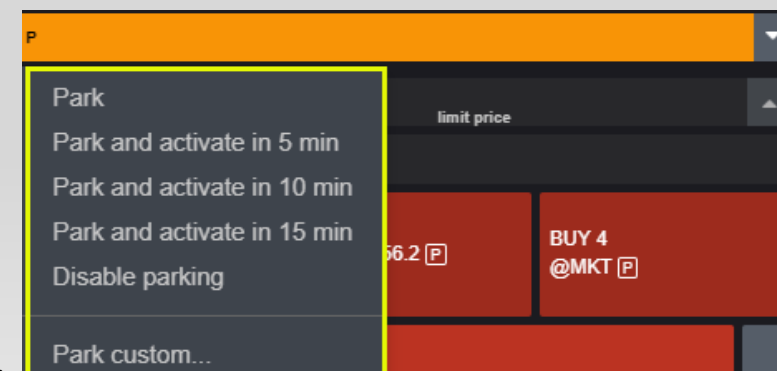
- Market order, limit order, stop order, stop limit order
- Duration (DAY、GTC、GTD、GTT、FAK、FOK)

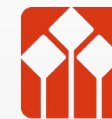
Parking and activating orders

- Turn on park and activate functionality in **Preferences**.



- Clicking the area with the **P** will turn park mode on and the next order placed will be a parked order. The control will turn orange to indicate park mode is on. Click again in the area with the **P** to turn park mode off.
- The drop-down next to the park control allows you to park and activate an order in a specified number of minutes or at a specified time.





ORDER PLACING

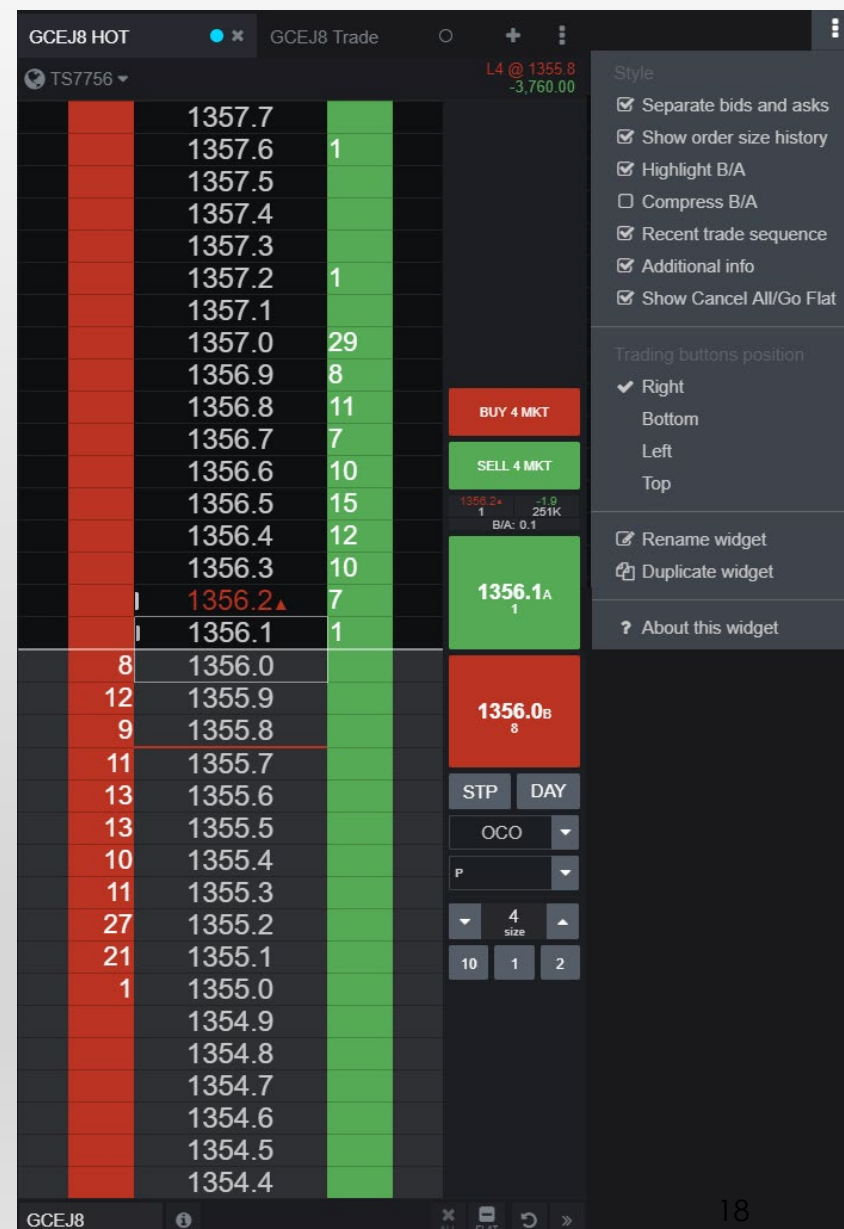
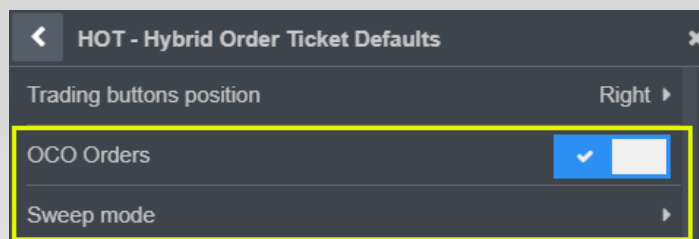
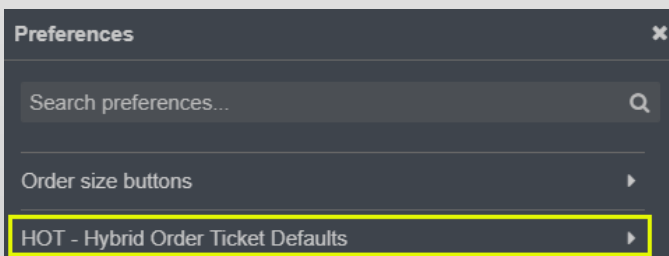
- HYBRID ORDER TICKET (HOT)

Hybrid order ticket:

- Market order, limit order, stop order, stop limit order
- Duration (DAY、GTC、GTD、GTT、FAK、FOK)
- Parking and activating orders

Besides, HOT includes:

- Cancel all the orders, liquidate position
- OCO, Sweep functions

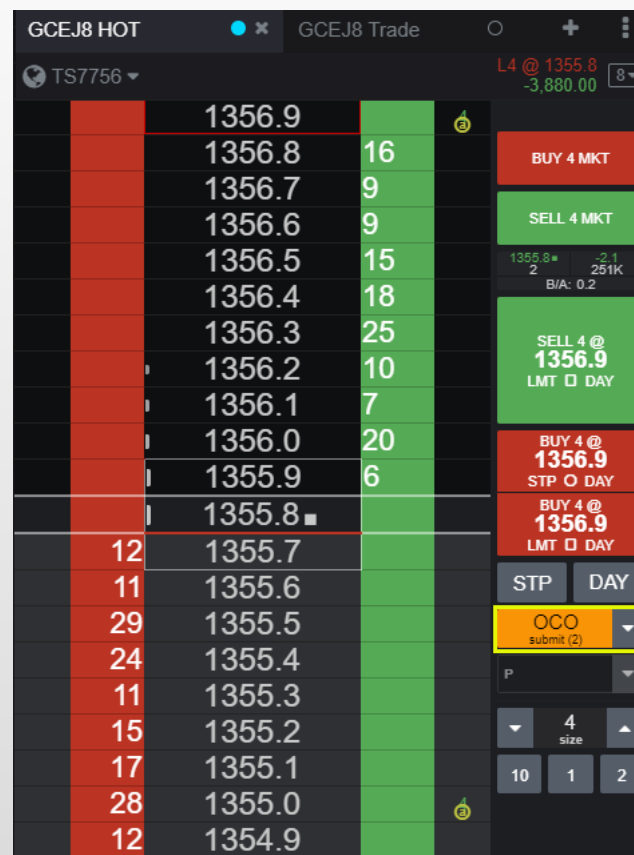


ORDER PLACING

– HYBRID ORDER TICKET (HOT)

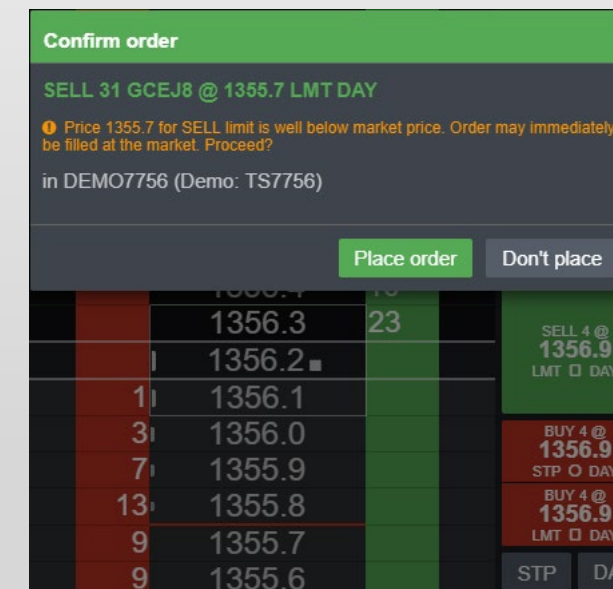
Use **OCO** functionality in the HOT to protect an existing position.

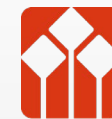
- Initiate the OCO mode by clicking the **Start** button next to the OCO label.
- Place the stop loss and target profit orders by either drag and drop or using the trading buttons.
- Click the **Stop** button to submit the OCO orders.
- When one of the orders fills, the other will be cancelled.



Sweep mode enables trades into the opposite side of the market and takes all resting orders in the book up to your price. Since functionality like this has high impact, it must be purposely turned on in preferences.

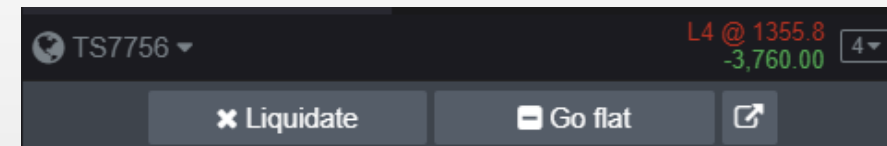
- Symbols must be explicitly added to be included in sweep mode. Once a symbol is added to the sweep list, clicking the DOM column will place a sweep order into the market.
- The software will always force a confirmation window for a sweep order to prevent unintended orders. The order size in the confirmation shows cumulative size up to the price that was selected. Yellow text shows the warning.
- Sweeps can be turned off at any time in preferences.





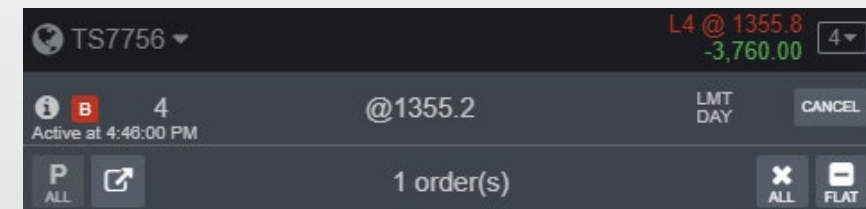
OFFSET/LIQUIDATE

- In real-time quotes and order placing pages, by clicking position of selected contract, you can offset or liquidate your position (liquidate means cancelling all the working orders while offsetting)

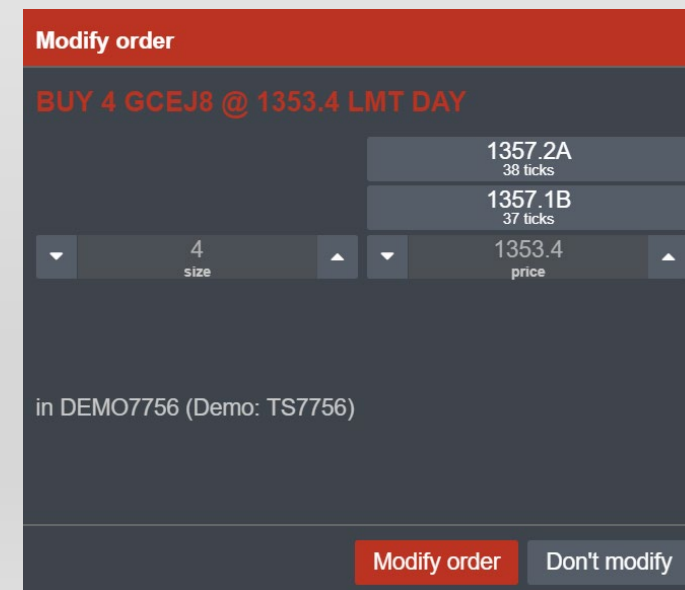


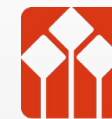
Query, edit, cancel and park orders

- In real-time quotes and order placing pages, by clicking selected order, you can check, edit, cancel or park that order.
- You can also open **working orders** to do the same thing.



Orders (Working)												
Account	Status	B/S	Qty	UnFld	Symbol	Ord P	Type	LMT P	DUR	Place T	#	
TS77...	Working	BUY	4	4	GCEJ8	1353.4	LMT		DAY	8:49:27 AM	87276	





ORDERS/POSITIONS

- Orders
 - Working orders
 - Filled orders
 - Cancelled orders
 - All orders

Orders (Working)		Orders (Filled)		Orders (Cancelled)		Orders							
TS7756													
	Status	B/S	Qty	UnFld	Symbol	Avg Fill P	Type	LMT P	DUR	Fld	Place T	#	
▼	Filled	BUY	4	0	GCEJ8	1355.2	LMT		DAY	4	2/15/18 4:13:36 PM	87258	
▼	Filled	BUY	4	0	GCEJ8	1353.4	LMT		DAY	4	8:49:27 AM	87276	

- Positions
 - Open positions
 - Purchase & Sales

Open Positions		Purchase & Sales											
TS7756													
	Date	Symbol	L	S	Avg	Cur	OPE	UPL	MVO	Desc			
>		CLEH8	1		59.08	USD	2,490.00	0.00	0.00	Crude Light (Globex): March 2018			
>		ENQH8	1		6558.50	USD	4,670.00	0.00	0.00	E-mini NASDAQ-100: March 2018			

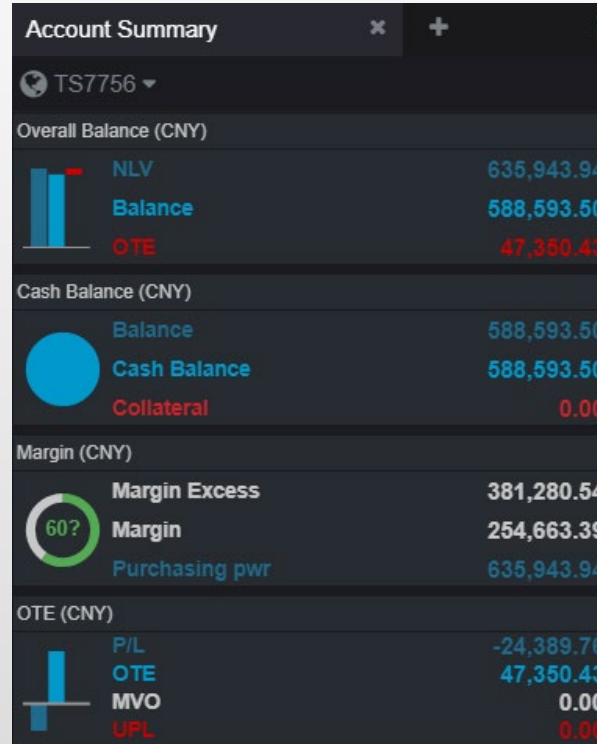
**You can also check or export the fills details for current trade day*

Fills													
TS7756													
Account	Time	Symbol	B	S	Fill P	Ord #	Pos						
TS7756 (DEMO7756)	12:45:22.994	GCEJ8	1		1353.4	872764398							
TS7756 (DEMO7756)	12:45:22.994	GCEJ8	1		1353.4	872764398							



ACCOUNT INFORMATION

- You can change currency type in **Preference**.



Account Summary TS7756

	USD	TOTAL (CNY)
Balance	92,670.00	588,593.50
OTE	7,455.00	47,350.43
P/L	-3,840.00	-24,389.76
OTE+P/L	3,615.00	22,960.67
Prev. day balance	96,510.00	612,983.27
Collateral	0.00	0.00
NLV	100,125.00	635,943.94
MVO	0.00	0.00
UPL	0.00	0.00
Cash excess	0.00	0.00
Purchasing pwr		635,943.94
%NC	-3.98	-3.98
Currency rate	6.3515	

Preferences

Search preferences...

Reporting currency: CNY

Position, OTE, P/L

Choose account(s)

Type to search account

All FCMs

All Sales Series

All accounts

Global (TS7756 (DEMO7756))

TS7756 (DEMO7756)

TS7756 selected

OK

Orders/positions & Account information

–Show single/multiple/all accounts by opening Choose account (as picture on the right shown)



CHARTS & STUDIES

Panning

- Dragging to the background of the chart to the right will pan back in time.

Zooming

- Dragging down on price (right bar) will shrink the chart vertically, dragging up will increase vertically.
- Dragging to the right on the time scale (bottom bar) will compress bars, dragging to the left will expand bars.
- Double tap (on the phone), or double-click (in a desktop browser) the background of the chart to reset the chart to default sizing and spacing.

Crosshair mode and Tooltips

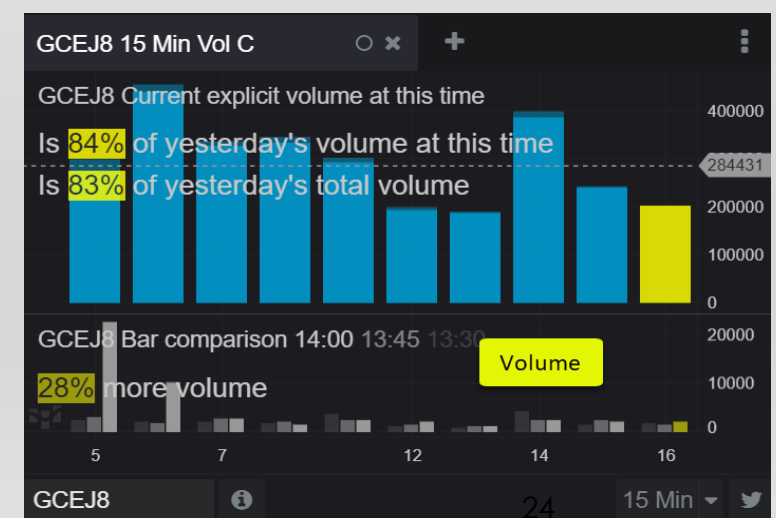
- To help highlight objects beneath your cursor on hover, enable crosshair mode by using the button in the toolbar.
- Hover over a bar or study to get a tooltip of the underlying data from that bar or study.

*You can customize time intervals.



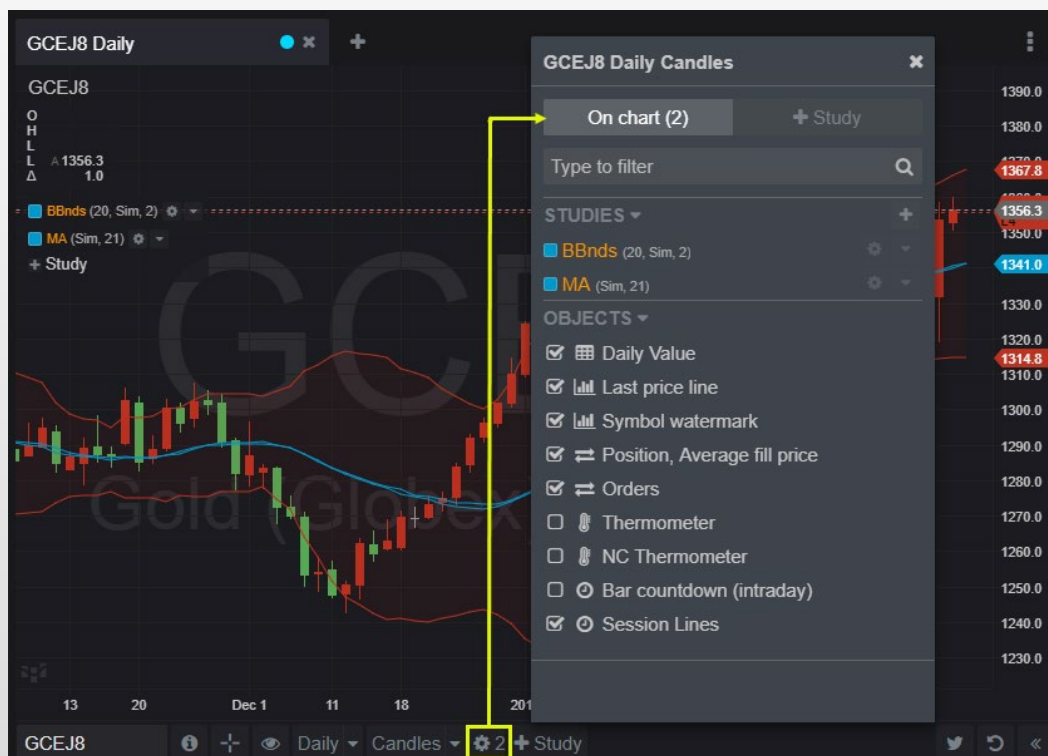


1. TYPES OF CHARTS





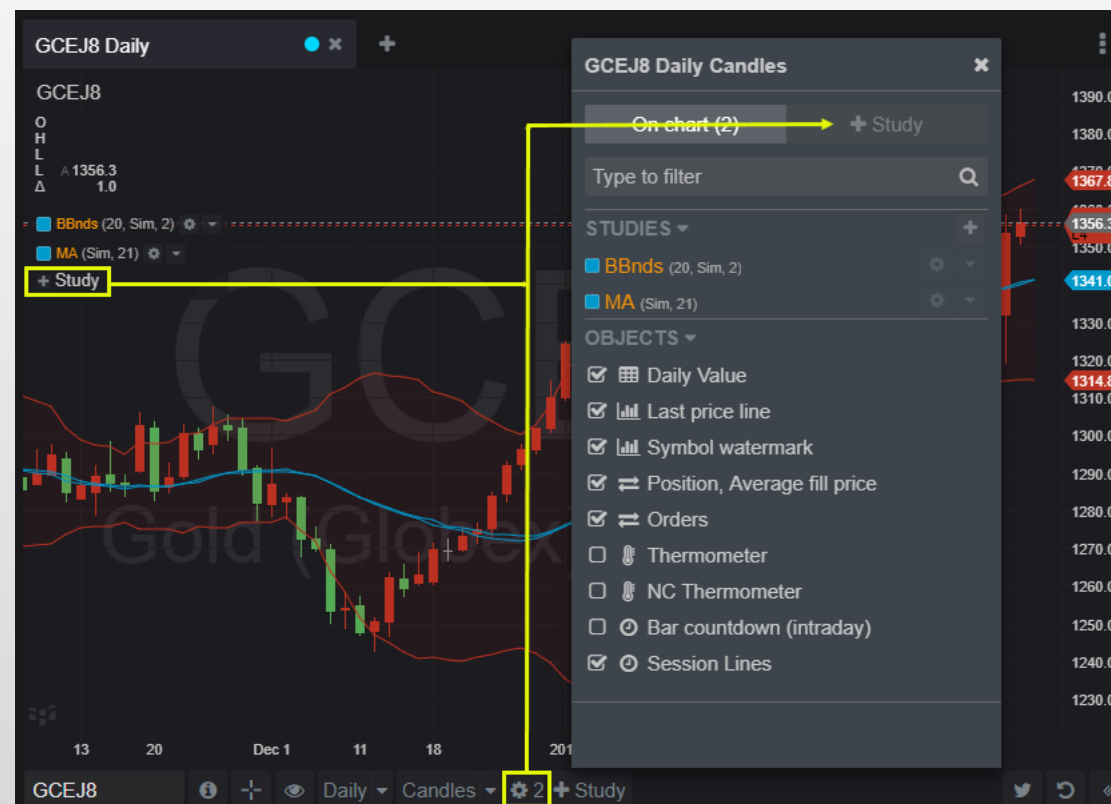
2. CHARTS MANAGEMENT



By clicking the gear button in yellow box (see picture above), you can:

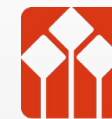
- Display/hide objects
- Remove/manage studies
- a) A number appearing beside the gear indicates how many studies are shown on the chart
- b) Remove a study by using the drop-down next to the study name either in the On chart dialog or on the left side of the chart

3. STUDIES



By clicking the “+ study” button, you can:

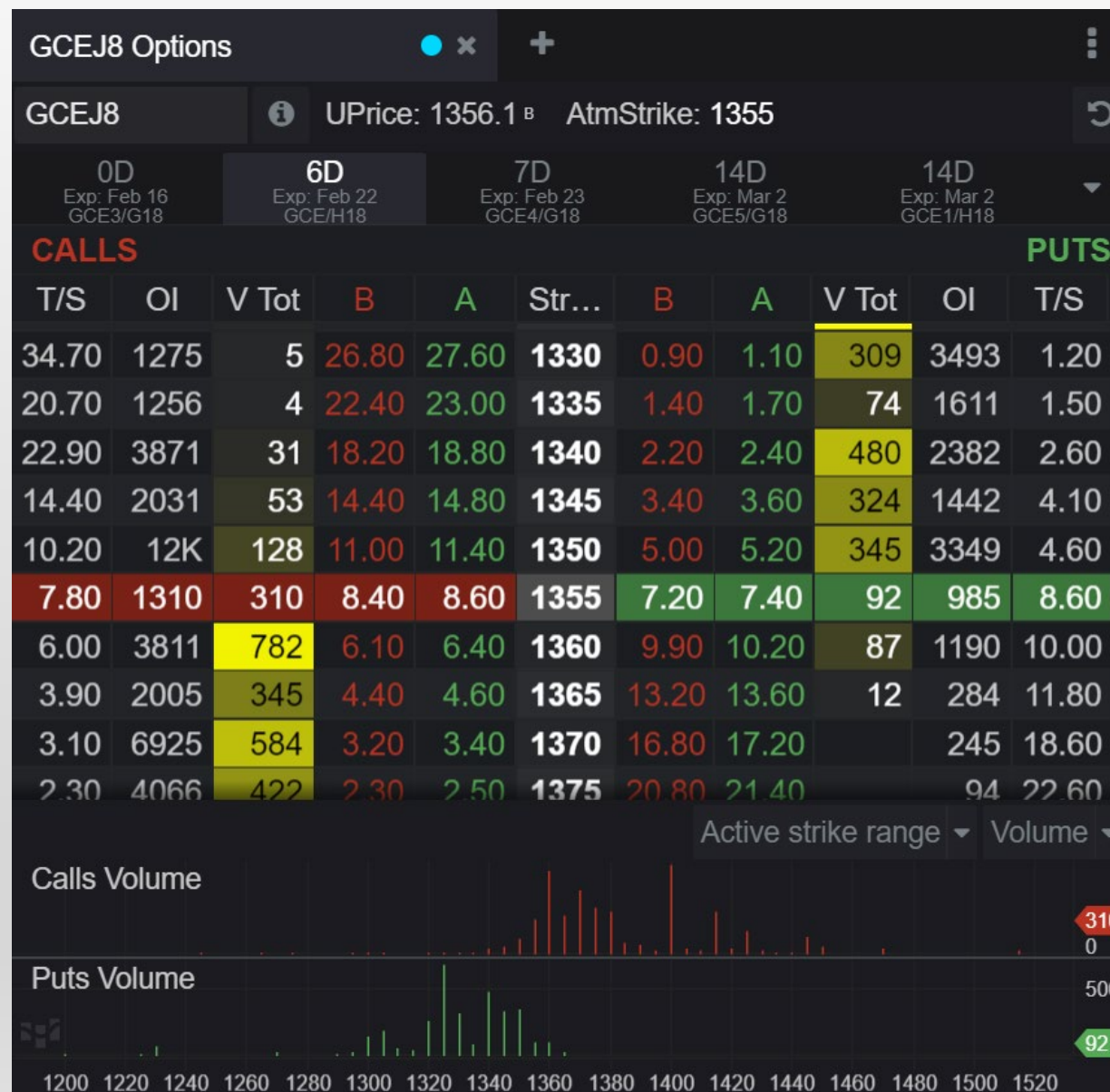
- Add studies
- Change study parameters/visual style by clicking the gear button
- Add the study to all the available charts by clicking the drop down button next to each study

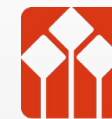


OPTIONS

Options page includes the following items:

- Add contract symbol
- Underlying futures price
- Exercise price
- Call/put options premium
- Options order placing
- Call/put options trading volume & open interest





NEWS

Add News Function

- Add customized news sources

News

FBI failed to act on tip accused Florida gunman wanted to kill
 PARKLAND, Fla. (Reuters) - The Federal Bureau of Investigation on Friday said it mishandled a January tip that the 19-year-old accused of killing 17 people in Florida had guns and the potential to carry out a school shooting.
 Reuters: U.S. 6m

Russians charged with 2016 U.S. election tampering to boost Trump
 WASHINGTON (Reuters) - A Russian Internet agency and more than a dozen Russians interfered in the 2016 U.S. election campaign in a multi-pronged effort to support Donald Trump and disparage rival Hillary Clinton, the U.S. Special Counsel said in an indictment on Friday.
 Reuters: Politics 19m

Russians charged with 2016 U.S. election tampering to boost Trump
 WASHINGTON (Reuters) - A Russian Internet agency and more than a dozen Russians interfered in the 2016 U.S. election campaign in a multi-pronged effort to support Donald Trump and disparage rival Hillary Clinton, the U.S. Special Counsel said in an indictment on Friday.
 Reuters: World News 19m

Select RSS feeds

CME Market Analysis x
<http://feeds.feedburner.com/featuredreports>

CME x
<http://feeds.feedburner.com/EconomicEventsAgriculture>

CME Economic Events: Interest Rates x
<http://feeds.feedburner.com/EconomicEventsInterestRates>

CME Economic Events: Energy x
<http://feeds.feedburner.com/EconomicEventsEnergy>

CME Open Markets x
<http://openmarkets.cmegroup.com>

Or add custom feed:

RSS address Add

Close

3D Quotes

S&P/TSX 60 25

S&P 500 2739.25 0.19%
 FTSE Index, Jun 13 7259.5 0.60%
 DAX Index, Jun 13
 NASDAQ 100 6826.50 0.15%
 Dow Futures 25281 0.19%
 Swiss Market

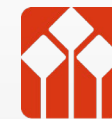
Global Index Window

World Clock

World Clock

Chicago 9:32 AM
 Frankfurt 4:32 PM
 Tokyo 12:32 AM

0.20%
 2739.50
 Euro STOXX 50: March 2018
 Nikkei 225 (Osaka): March 2018



AGENDA

- Introduction of account application procedures, login page, language setting and home page
- Navigation bar (preference setting, symbol list, add & connect tools)
- Main Pages
 - Real-time quotes
 - Order placing window, orders/position, account info
 - Charts & Studies
 - Options
 - News
- Smartphone version
- Contact us

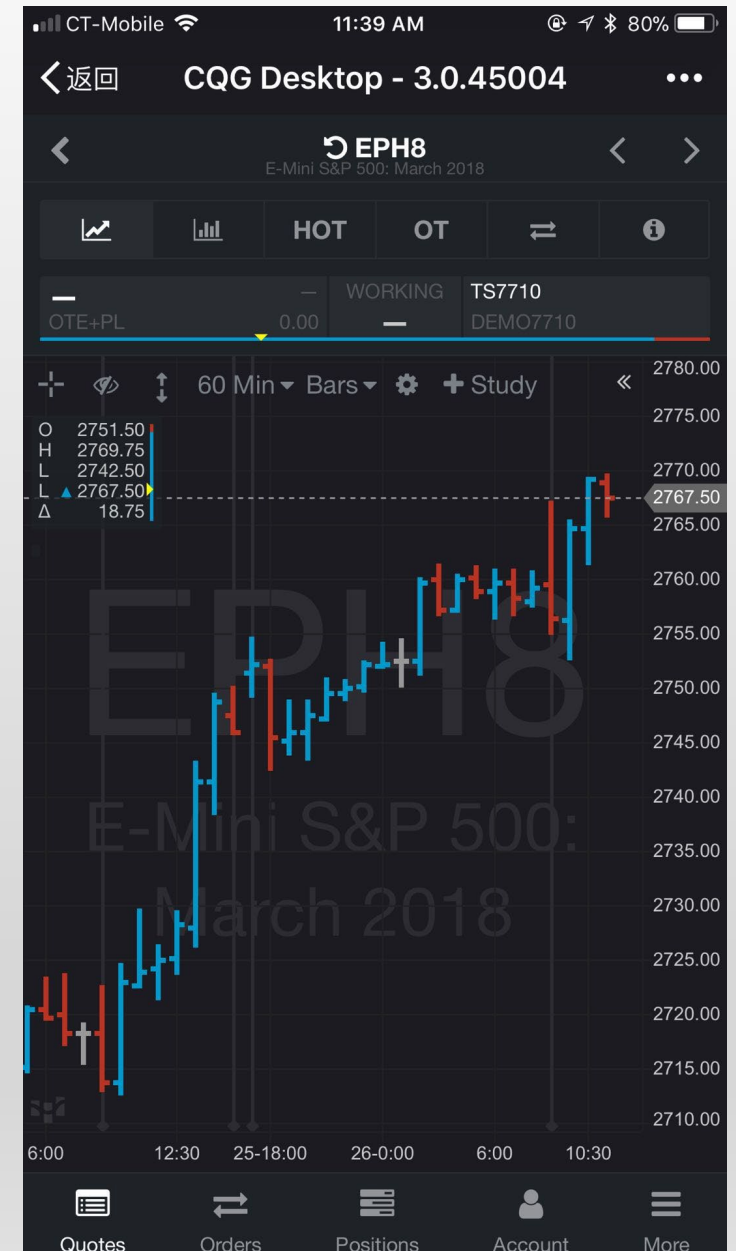
SMARTPHONE VERSION

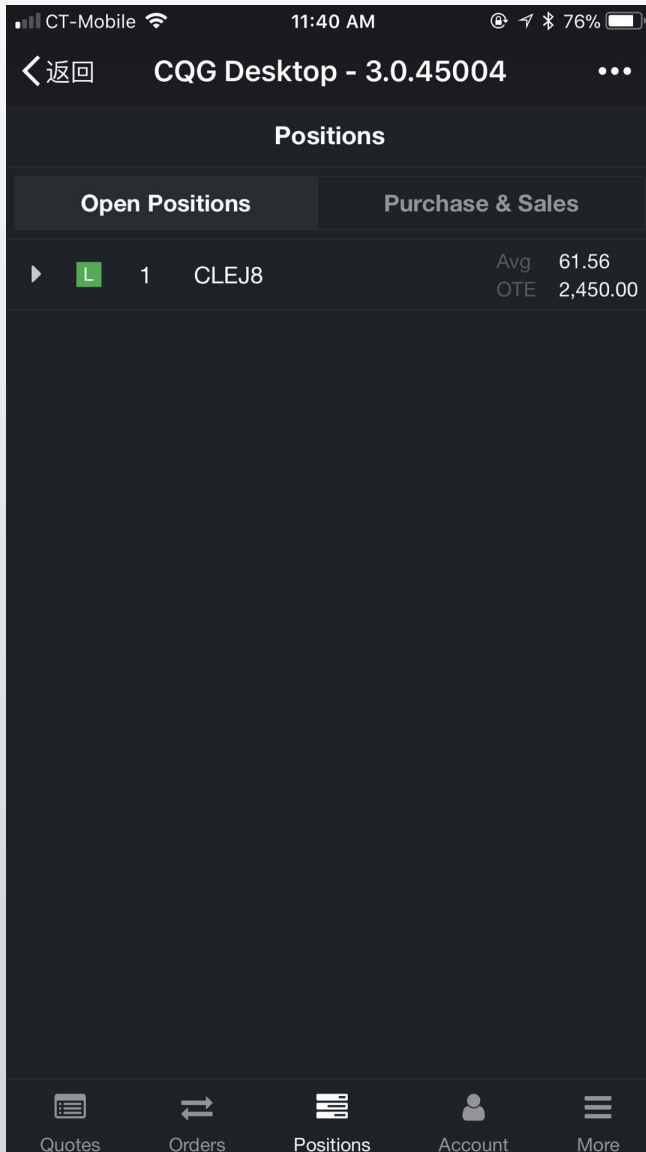
- Use your smartphone to go to the same website provided in your registration email, and log in
- As Picture 1 shows, there are real-time quotes, order information, position, account information in the bottom of the page.
- In real-time quotes page, you can add contracts by clicking the “+”.
- By clicking any of the contracts, you can see the specific quotes for that contract and place order (as shown in Picture 2).

Picture 1

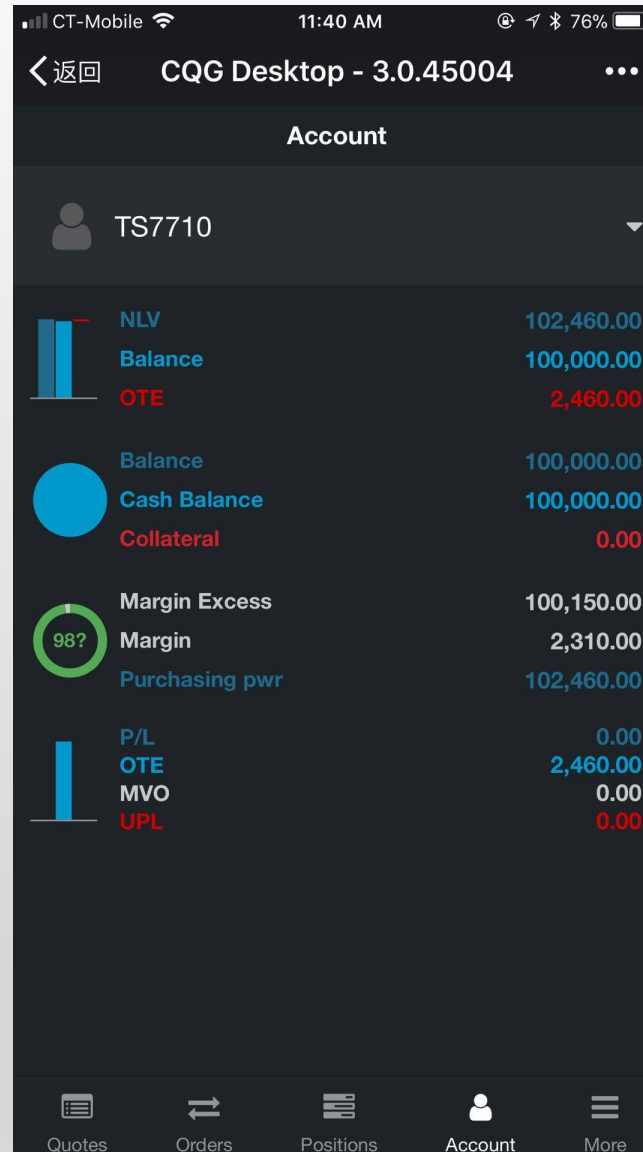


Picture 2

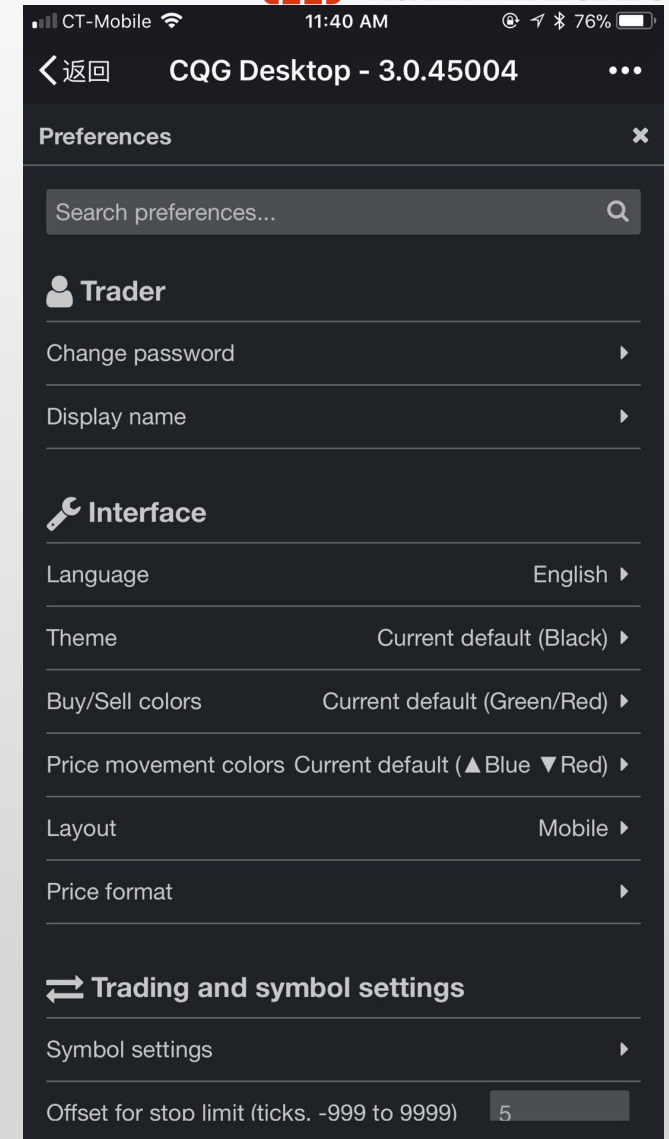




Position



Account information, P/L, Margin, Equity



You can change language and color setting in **Preference**



For more information, please watch “CQG tutorial video” created by Huatai USA or contact us.

Video link: http://v.youku.com/v_show/id_XMzQ1MjExNTc0NA==.html

CONTACT US

Address: 200 W Monroe St, Suite 1675, Chicago, IL 60606

Phone: 1 (312) 982 0779

Email: inquiry@huataiusa.com

Website: www.huataiusa.com

DISCLAIMER: FUTURES TRADING ENTAILS SIGNIFICANT RISK OF LOSS WHICH SHOULD BE UNDERSTOOD PRIOR TO TRADING AND MAY NOT BE SUITABLE FOR ALL INVESTORS. PLEASE CONSIDER WHETHER TRADING IS SUITABLE FOR YOU. THIS IS NOT A SOLICITATION TO BUY OR SELL FUTURES PRODUCTS BY HUATAI FINANCIAL USA INC.